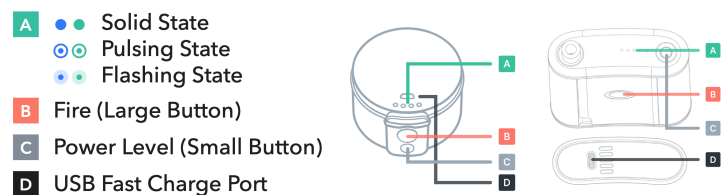


1

1 • BOWLE AND FLASKE OVERVIEW



- Lock/Unlock** • Click **B** 3 times quickly.
- Change Power Level** • Click **C** to cycle.
- Start (Unlocked)** • Click and release **B**
- Check Battery** • Click and release **B + C**
- Powering On** • Click the large **B** button 3 times quickly.
- Standby Unlock/Lock (for everyday use)** • Click the large **B** button 3 times quickly to lock or unlock the device.
- Shipping Lock (for long-term storage or travel)** • Press both buttons **B + C** 4 times quickly.
• To unlock from this mode, connect the device to a charger.

POWER AND CHARGING

- Bowle and Flaske must be charged before first use. The battery charging level is indicated with blue LEDs.
●●●●● ●●●●● ●●●●● ●●●●● ●●●●●
0 - 20% 30 - 40% 50 - 60% 70 - 80% 90 - 100%
- Bowle and Flaske will only charge with a 5V 3A USB A to USB C charge adapter and cable.

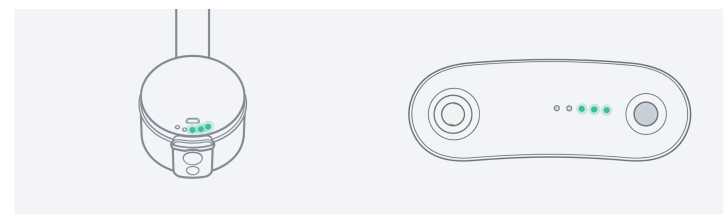
2

BATTERY AND CHARGING GUIDELINES

- It is recommended to have 40%-60% battery at the start of a session.
- To check battery life, quickly click and release both large **B** and **C** small buttons at the same time.
- Wait for a minute or two after your last activation for the true battery level to be reflected.
- A full battery is indicated with all blue solid LEDs. If the device is locked while charging, the LEDs will turn off after a few minutes. If the device is unlocked while charging, LEDs will remain on.
- Only charge Bowle and Flaske with the supplied cable.
- Never leave your device plugged in to charge unattended and lock your device when not in use (Click **B** three times quickly).**
- When not in use for extended periods, place device in suspension (Click **B + C** four times quickly)**

2 • BOWLE AND FLASKE OPERATION & METHOD

- After device is unlocked, cycle power to desired level with **C** Power Level Button.
●●●●● ●●●●● ●●●●● ●●●●● ●●●●●
Soft Low Medium High Max
 - Click and release **B** the large Fire button. Once the oven is up to power, the LEDs will turn **solid green**.
 - Begin inhalation immediately from mouthpiece as soon as LEDs turn **solid green** (smooth and long, steady inhalation recommended).
- If the green LED light remains on after 3 seconds without inhalation, immediately click and release the large fire button to shut off the oven.**



- You can activate Bowle and Flaske in three different methods while UNLOCKED.

3

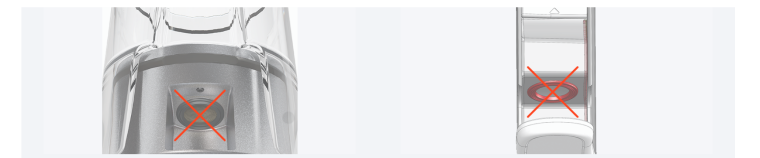
3 • LOADING BOWLE OR FLASKE WITH POTTER (OPTIONAL)

- STEP 1**
Load pinky-sized herbs in between top shredder. (No more than a half gram in total. Less is more.)
 - STEP 2**
Flip Potter upside-down and rotate to shred. (At least 5 clockwise and anti-clockwise rotations. Take care to firmly hold all sections together.)
 - STEP 3**
Flip Potter right-side-up and rotate to disperse into Oven Pots. (At least 5 clockwise and anti-clockwise rotations. Take care to firmly hold all sections together.)
 - STEP 4**
Lightly tap Potter on a flat surface. (Take care to firmly hold all sections together)
 - STEP 5**
Gently separate the top and mid sections to reveal 4 filled pots. (Take care to open top and mid sections in a clam shell manner)
 - STEP 6**
Place Oven Pot in detached stem and insert stem into Puck Base Unit or Power Base Unit (Flaske)
- OPTIONAL**
To use Bowle with drinkware. Place supplied drinkware unit on Bowle before pouring in your drink of choice.

- Do not clean or soak Potter or the Drinkware with any isopropyl. See care and maintenance guide and manual.**

5

- Ensure the stem is placed and aligned on the stem base assigned stem track.
- Ensure the top of the stem is aligned with the lock indent at the top.
- Push the stem inwards to align at the top and bottom (track and lock indent)
- Ensure the session storage is correctly inserted.
- The stem must fit completely flat against the Power Base Unit to correctly operate.



- NEVER interact with the oven screen in the stem slot of Bowle or Flaske. Doing so will damage your device. Damage to the screen is not covered under your warranty.**

6 • SUSTAINABLE TOLERANCE USAGE GUIDELINE

- Try to have no more than 3 sessions a day.
- Endeavor to remain within lower power settings and slowly work your way up.
- Avoid consumption of alcoholic beverages during aromatherapy.
- Take breaks and stop use during periods of any cardio-vascular health illness or discomfort. Ensure your source of aromatherapy natural herbs is trustworthy.
- Take note of and avoid organic compounds and natural substances that may cause irritation.
- Never overfill Ceramic Pots past 75% capacity and endeavour to empty Ceramic Pots immediately after every session to keep cleaner longer.
- Charge Bowle and Flaske after every second session and endeavour to avoid completely depleting your batteries.
- Never touch or interact with the screen shielding the oven outlet in the PBU stem slot! Doing so will cause malfunction.

7

PRESS AND HOLD METHOD: MAXIMUM BATTERY LIFE

- Press and hold the large activation **B** button. After a short moment, the device will vibrate and the LEDs will turn **green**.
- Begin inhaling while continuing to hold the **B** button.
- Release the **B** button one to two seconds before completing your inhalation.

CLICK-ON, CLICK-OFF METHOD: EXCELLENT BATTERY LIFE

- Click and release the large Fire/Start **B** button
- Wait for the device to vibrate and turn **green**, then begin inhalation immediately.
- One or two seconds before you're done with your inhalation, click and release the Fire/Start **B** button again to deactivate the heater.

CLICK AND RELEASE (AUTO-OFF) METHOD: GOOD FOR BATTERY LIFE

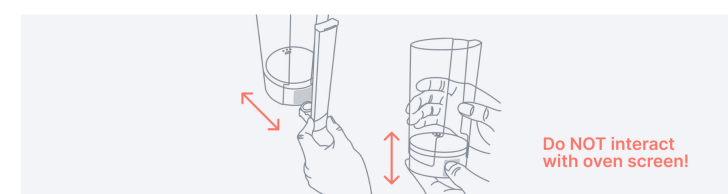
- Press and quickly release the large **B** button. Wait for the vibration and **green** LED, then begin your inhalation.
- The device will automatically shut off after sensing you've finished your inhalation.

POWER LEVELS AND AEROSOL VISIBILITY

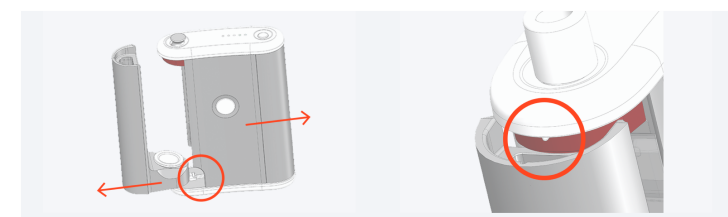
- Bowle and Flaske offers five power levels, adjustable with the small power level **C** button located below the large **B** Fire/Start activation button.
- Each level requires at least 6 seconds of steady medium paced inhalation.
- Level 1-2** delivers soft, terpene-rich aromatherapy with little to no visible aerosol.
- Level 3-4** yield denser and more visible aerosol. For dry herbs, we typically recommend using Level 4 as the upper limit.
- Level 5** is suited for higher-temperature applications, including certain organic extracts (used with our natural hemp fiber wicks).
- Important:** For optimal performance, ensure the stem is fully inserted into the slot and that you inhale steadily for at least 8 seconds once the device is **green** and active.
- Higher power levels consume significantly more battery power.
- After you learn how to operate your device. Here are important tips on maintaining your device.

4

4 • DETACHING BOWLE STEM AND OPTIONAL DRINKWARE

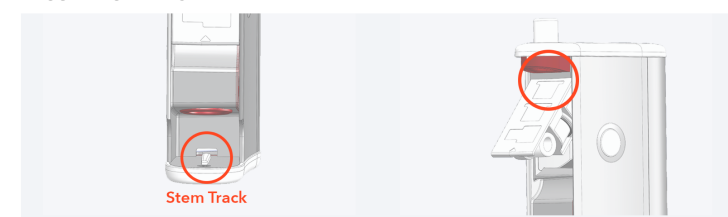


5 • DETACHING AND ATTACHING THE STEM TO FLASKE CONNECTING AND DISCONNECTING



- For ease of connection and disconnection. PINCH and GRIP the base of the stem with thumb and index finger cut-out.
- Using your other hand to hold the power base unit firmly—avoid the activation button.
- Pull the stem away from the Power base unit.
- First focus on the disconnection, and then afterward separate the stem.
- Stem disconnection and reconnection is ideal in two smooth motions, rather than one instant effort.

RECONNECT THE STEM



6

- Thank you kindly for your support.
- Visit tafee.com/support for operating manual and guides and customer service.
- Email info@tafee.com for support. Mon - Fri, 11am – 4pm EST

WARRANTY

- Tafée™ guarantees to you that if used for its intended purpose the Bowle® and Flaske™ will be free from defects in material or workmanship caused by the manufacturing process for the warranty period of two years.
- This warranty does not cover accessories or optional device parts exposed to normal use, such as the Mouthpiece, Drinkware, Stem, Ceramic Oven Pots and Herb Shredder.
- To activate your warranty, please register your product at tafee.com.

USER PRECAUTIONS

- Major changes in the environment (external conditions) may cause the Bowle® and Flaske™ to malfunction. Always protect the Puck or Power Base Unit (PBU) against liquids, rain or humidity, and high temperatures, including direct sunlight.
- Handle with care Ceramic Oven Pots are hot surfaces that can exceed 50°C.**
- Do not click and release the fire button (start button) without immediate airflow after the device turns green Doing so repeatedly will damage Bowle and Flaske™ and invalidate your warranty.**
- To prevent accidentally activating the device while in transport, always lock your device with 3 quick clicks of the start **B** button when not in use.**
- By using this device you agree to all Tafée terms and conditions and have read the full operating manual and all the operational guidelines of Bowle and and Flaske™. Failure to do so puts you at risk of damaging your device and voids all warranties.**



8

- The device parts and accessories may require an external hygienic maintenance with extended use. Adhere to this cleaning guide to care and maintain your Bowle and accessories.

CLEANING THE PUCK OR POWER BASE UNIT

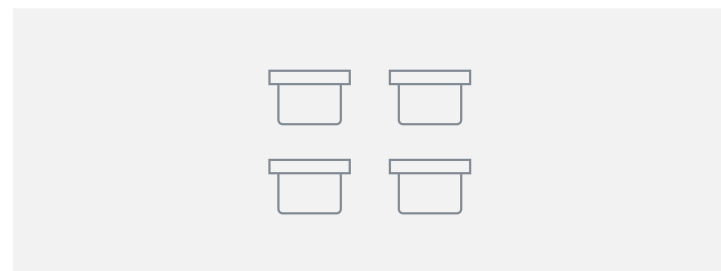
- The Puck and Power Base Unit (PBU) is a low maintenance design. Only basic cleaning with a clean soft fiber cloth for maintenance is required, and this is based upon the frequency of use.
- Before cleaning the PBU, disconnect the charger from the socket. The PBU and the charger should only be cleaned externally with a dry or very lightly damp cloth and must be wiped dry afterwards.
- **Never touch or interact with the oven screen or silicone ring inside/above. The PBU stem slot.**
- **Users are advised to not fill Pots to such level where material comes in contact with the Top of the Oven.**
- **In the event particles of material settle or collect inside of the oven slot of the PBU. Use the included black, soft bristle cleaning brush lightly and gently to clean away the particles.**

1

- **Avoid touching or interacting or removing the Internal Oven Gasket and Protecting Screen. Doing so will result in operational malfunction not covered under warranty.**

CERAMIC OVEN POTS

- The Ceramic Oven Pots along with its stainless-steel screen bottom may be cleaned together. Make sure to remove the gasket surrounding the Ceramic Oven Pot first. Also, make sure to remember to place this small gasket at a safe place remembering to place it back around the Ceramic Oven Pot for the Ceramic Oven Pot to be functional for use after cleaning in the Stem.
- Failure to re-insert the silicone gasket around the ceramic pots after cleaning will result in no function from the Bowle or Flaske.
- Do not separate the stainless steel screen from the ceramic pot when cleaning.



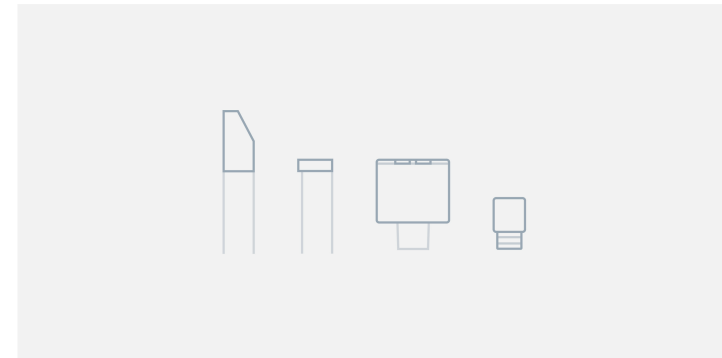
2

THE STEM

- Lay flat on its sides in a deep-dish Tupperware or, in a tumbler with the lower Ceramic Oven Pot housing of the Stem completely immersed inside the cleaning substance for up to 12 hours. Never unscrew or disassemble the base of the stem to clean.

THE MOUTHPIECE

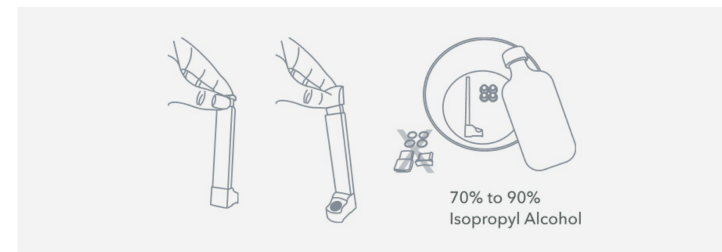
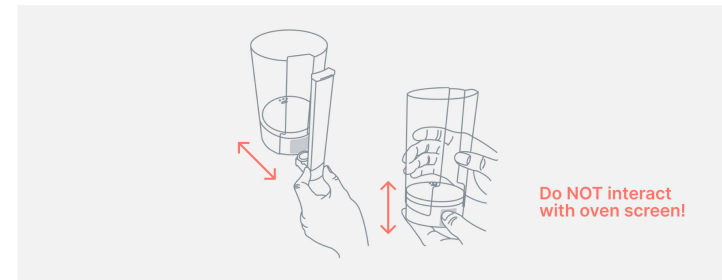
- The mouthpiece or silicone gaskets should not be placed in ISO. They can be soaked in warm water and washed with non-toxic dish cleaning detergent. It should be rinsed in warm water for at least 5 minutes to remove all traces of soap before drying for use.



3

CLEANING STEM, MOUTHPIECES, CERAMIC OVEN POTS, DRINKWARE, AND HERB SHREDDER

- The Stem, Mouthpieces and Ceramic Oven Pots, should be cleaned when there are visible large collections of particles or residue inside.
- Before cleaning these accessories:
- Detach the Stem from the PBU, also separate the Ceramic Oven Pot and Mouthpiece from the Stem.



- Separate the sealing gasket surrounding the Ceramic Oven Pot. The stainless steel screen in the ceramic oven pots do not need to be separated for cleaning. The PBU and Charger should NOT be near the cleaning area.

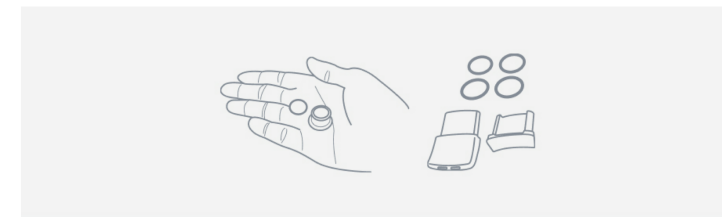
4

THE DRINKWARE

- The Drinkware should be cleaned after each use. Tafée suggest rinsing in warm water and a soft cloth wash with a non-toxic dish washing detergent. After which the Drinkware should be cleaned dry with a clean microfiber cloth to prevent scratches and swirls. Alternatively, the Drinkware may be also cleaned in a Dishwasher (at the top section of your dishwasher). Tafée recommends hand wash. Never clean or soak Drinkware in isopropyl.

POTTER HERB SHREDDER

- Potter Herb Shredder should be cleaned using the supplied maintenance kit when the corners of the shredder lodge particles that interfere with operation. The brush and the pick/stir tool may be used to dislodge accumulated particles over time and maintain the functionality of the shredder.
- The cleaning time depends on the accumulated residue. Never clean or soak Potter+ acrylic versions in isopropyl or ethanol.



5

- Use a soft tube brush, finger or cotton swabs to remove any internal residue.



- For deep cleaning, immerse ONLY the following parts completely in Ethanol or Isopropyl alcohol for cleaning (Ceramic Pots and Stem Only). Afterwards they should be thoroughly rinsed in water possibly after also using a non-toxic pH balanced dish cleaning detergent.
- Both the Ceramic Oven Pot and the Stem must be completely dried with a soft absorbent cloth internally and externally. The Stem may need to be shaken and blown with air a few times to dislodge water residue left internally after cleaning.
- Never boil the accessories or immerse in hot water for a long time. High temperatures or lengthy exposure to cleaning agents may deform or discolor the accessories.

6

GOOD BATTERY HABITS

- A few tips to get maximum use per charge and good battery habits.
- 1 Use the Press and Hold **B** Fire Button operation method over the Press and Release method.
- 2 With the press and hold method, continue to inhale aerosol for a few seconds even after releasing the **B** Fire Button as aerosol can still be produced even after the oven shuts down when the **B** Fire button is released. This increases efficiency of both material consumed and reduces battery life used per inhalation.
- 3 Charge Bowle and Flaske after every second session and endeavor to avoid completely depleting your batteries.
- 4 High-discharge cells like those used in the Bowle and Flaske, similar to those in electric vehicles, can degrade faster and engage safety lockout protocols if consistently discharged to 0%.
- 5 To check battery life, quickly tap and release both **B** + **C** buttons at the same time. Wait for a minute or two after your last activation for the true battery level to be reflected.
- 6 You may charge to full safely—Bowle and Flaske includes overcharge protection. However, do not leave the device charging unattended for long periods (e.g. overnight).

7

CHARGING DISPLAY BEHAVIOUR

- When the device is unlocked and connected to a charger, the LEDs will remain on and gradually increase until all 5 bars are lit, indicating a full charge (80-99%).
- When the device is locked (via 3 quick clicks of the large **B** button) and connected to a charger, the LEDs will briefly indicate the charge level, then automatically shut off after a few minutes to minimize light pollution—especially useful when charging in dark environments.
- If the device is unplugged and reconnected, the LEDs will display 5 solid bars (if fully charged) before shutting off again after a few minutes.

8